



Looking Out For You

Annual Shareholders Meeting

May 19, 2016

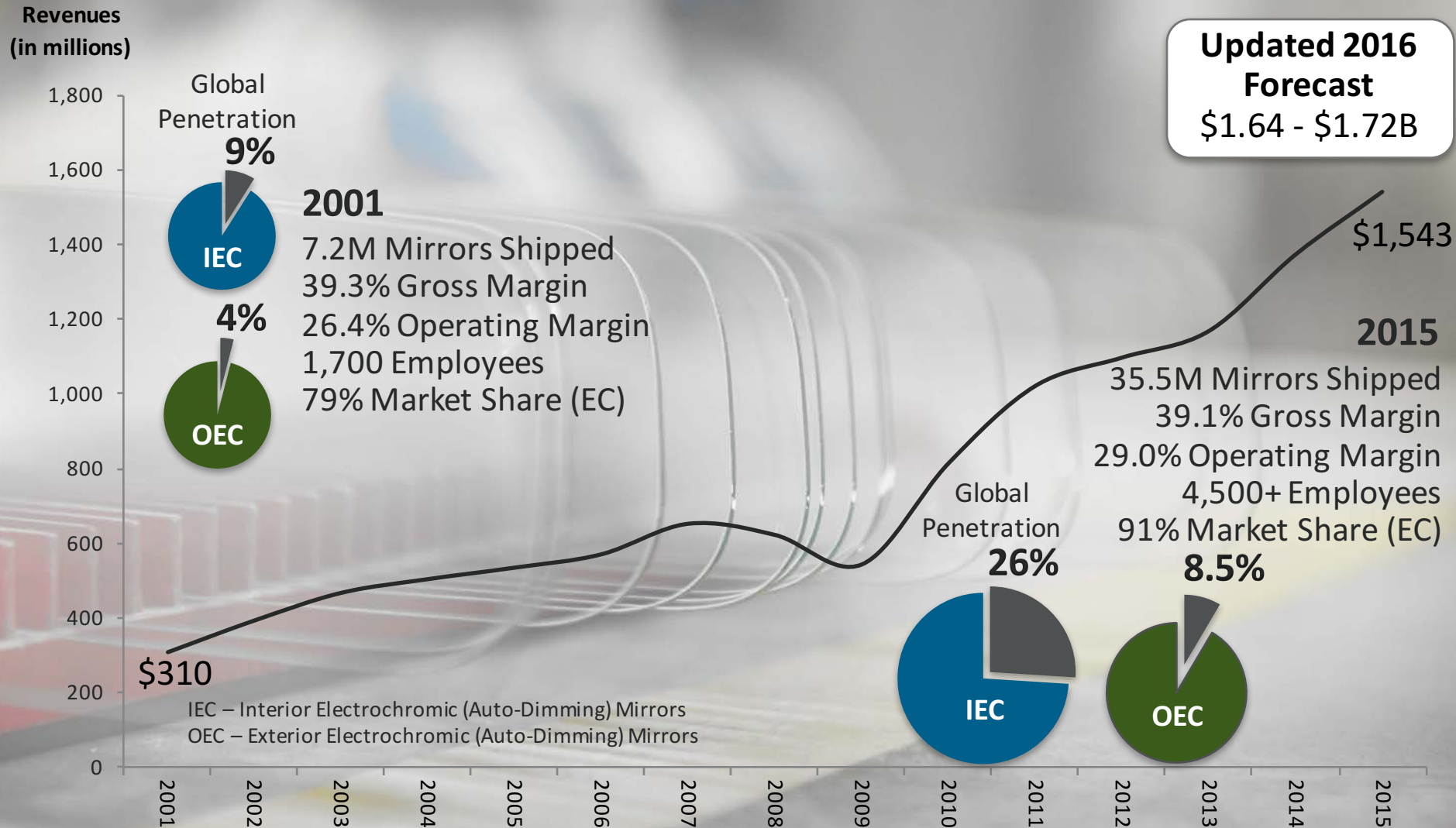




Safe Harbor for Forward-Looking Statements

This presentation contains forward-looking statements within the meaning of the safe harbor provisions of the Private Securities Litigation Reform Act of 1995. The statements contained in this communication that are not purely historical are forward-looking statements. Forward-looking statements give the Company's current expectations or forecasts of future events. These forward-looking statements generally can be identified by the use of words such as "anticipate", "believe", "could", "estimate", "expect", "fore- cast", "goal", "hope", "may", "plan", "project", "will", and variations of such words and similar expressions. Such statements are subject to risks and uncertainties that are often difficult to predict and beyond the Company's control, and could cause the Company's results to differ materially from those described. These risks and uncertainties include, without limitation, changes in general industry or regional market conditions; changes in consumer and customer preferences for our products; our ability to be awarded new business; continued uncertainty in pricing negotiations with customers; loss of business from increased competition; customer bankruptcies or divestiture of customer brands; fluctuation in vehicle production schedules; changes in product mix; raw material shortages; higher raw material, fuel, energy and other costs; unfavorable fluctuations in currencies or interest rates in the regions in which we operate; costs or difficulties related to the integration of any new or acquired technologies and businesses; changes in regulatory conditions; warranty and recall claims and other litigation and customer reactions thereto; possible adverse results of pending or future litigation or infringement claims; negative impact of any governmental investigations and associated litigations including securities litigations relating to the conduct of our business. Readers are cautioned not to place undue reliance on these forward-looking statements, which speak only as of the date they are made. The Company undertakes no obligation to publicly update or revise any forward-looking statement, whether as a result of new information, future events or otherwise, except as required by law or the rules of the Nasdaq Global Select Market. Accordingly, any forward-looking statement should be read in conjunction with the additional information about risks and uncertainties identified under the heading "Risk Factors" in the Company's latest Form 10-K and Form 10-Q filed with the SEC.

A History of Sustained Growth





- Vehicle-to-Home Automation
 - Garage door openers and gates
 - Security systems
 - Home lighting and automation
- Creating a new market in China
 - Parking spot barriers
 - Garage doors
 - Existing automotive OEMs

Consumer Research in China shows:

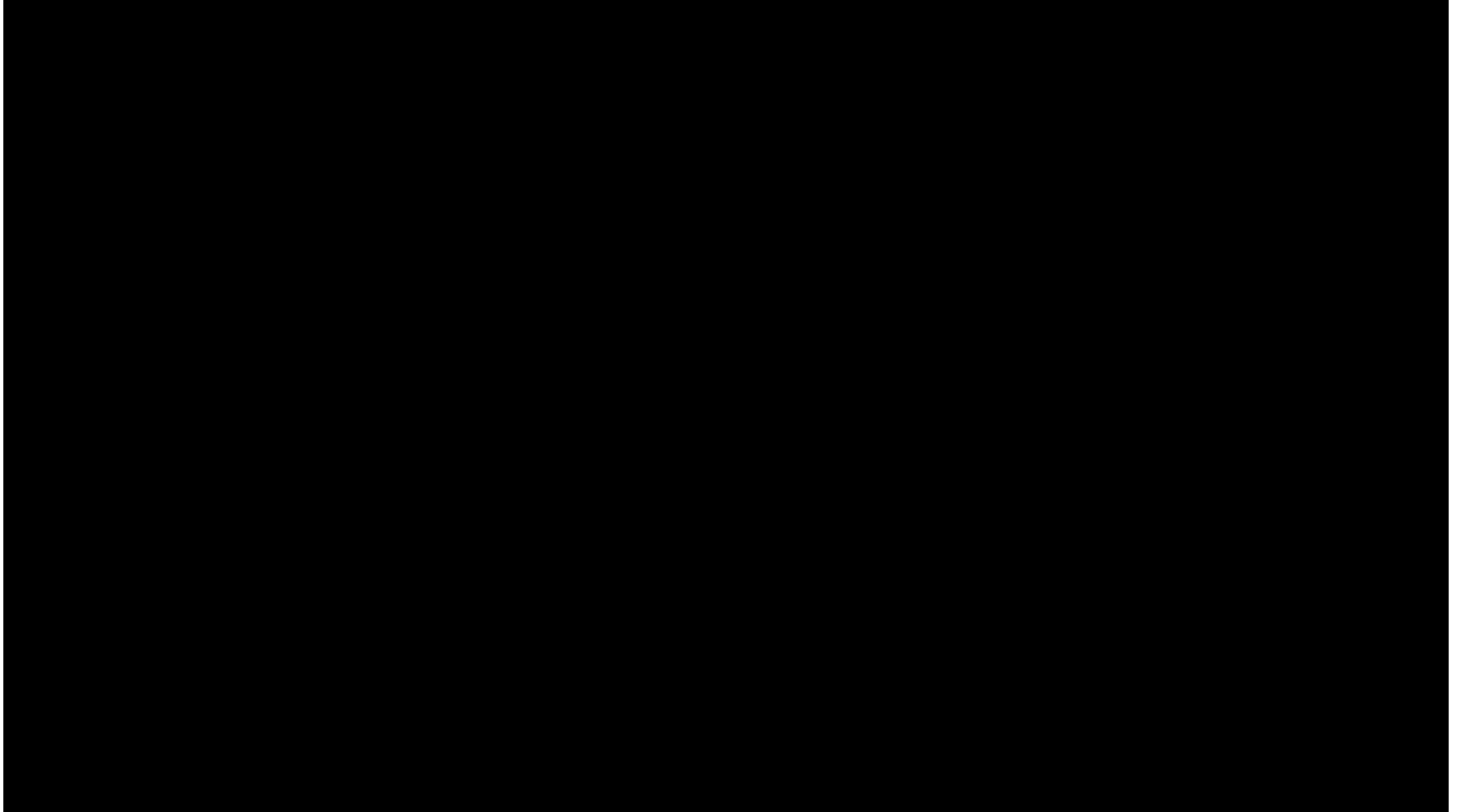
- **74%** of car owners are interested in purchasing a remote controlled parking barrier
- **79%** would be interested in HomeLink



- Additional Bluetooth Smart (BLE) functionality:
 - Simple SmartPhone App Integration
 - Enhanced Training of GDO Remote
 - Software Updates
 - Re-programmable, Location Based, Buttons
 - Home automation, text messages, e-mail...



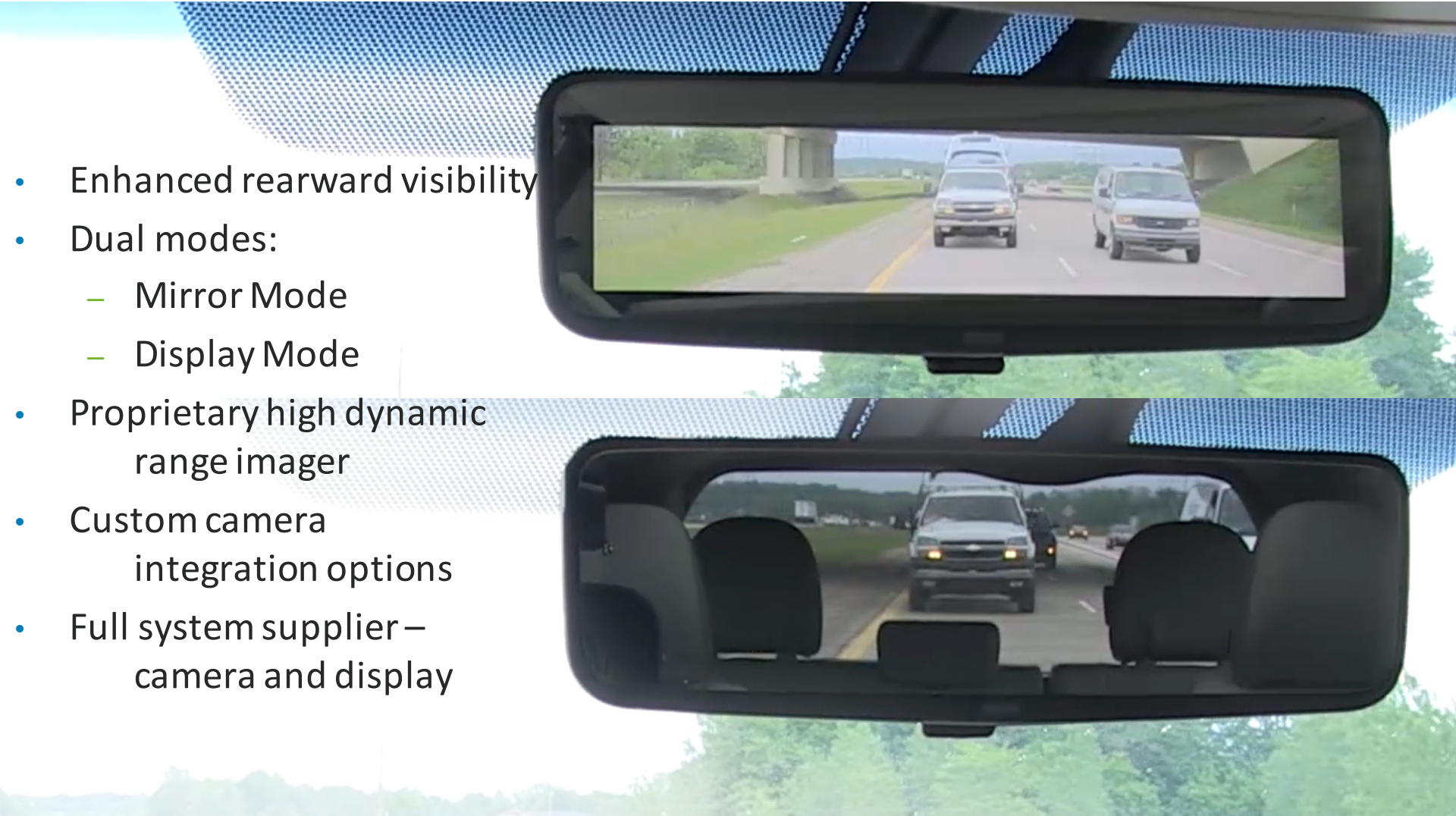
HomeLink® Commercial



<https://www.youtube.com/watch?v=6Ssal5w8FTw>

Full Display Mirror

A display when you want it, a mirror when you need it.



- Enhanced rearward visibility
- Dual modes:
 - Mirror Mode
 - Display Mode
- Proprietary high dynamic range imager
- Custom camera integration options
- Full system supplier – camera and display

Universal Toll Module™ (UTM)

Universal Toll Collection Technology for Vehicle Integration



- Single hardware/software solution provides access to all US tolling protocols
- Applications:
 - Traditional toll roads / HOT Lanes
 - Traffic flow monitoring
 - Airports and bridges
 - Parking garages
 - Gated communities / entry gates
 - Government & corporate campuses
 - Hospitals / universities

Universal Toll Module

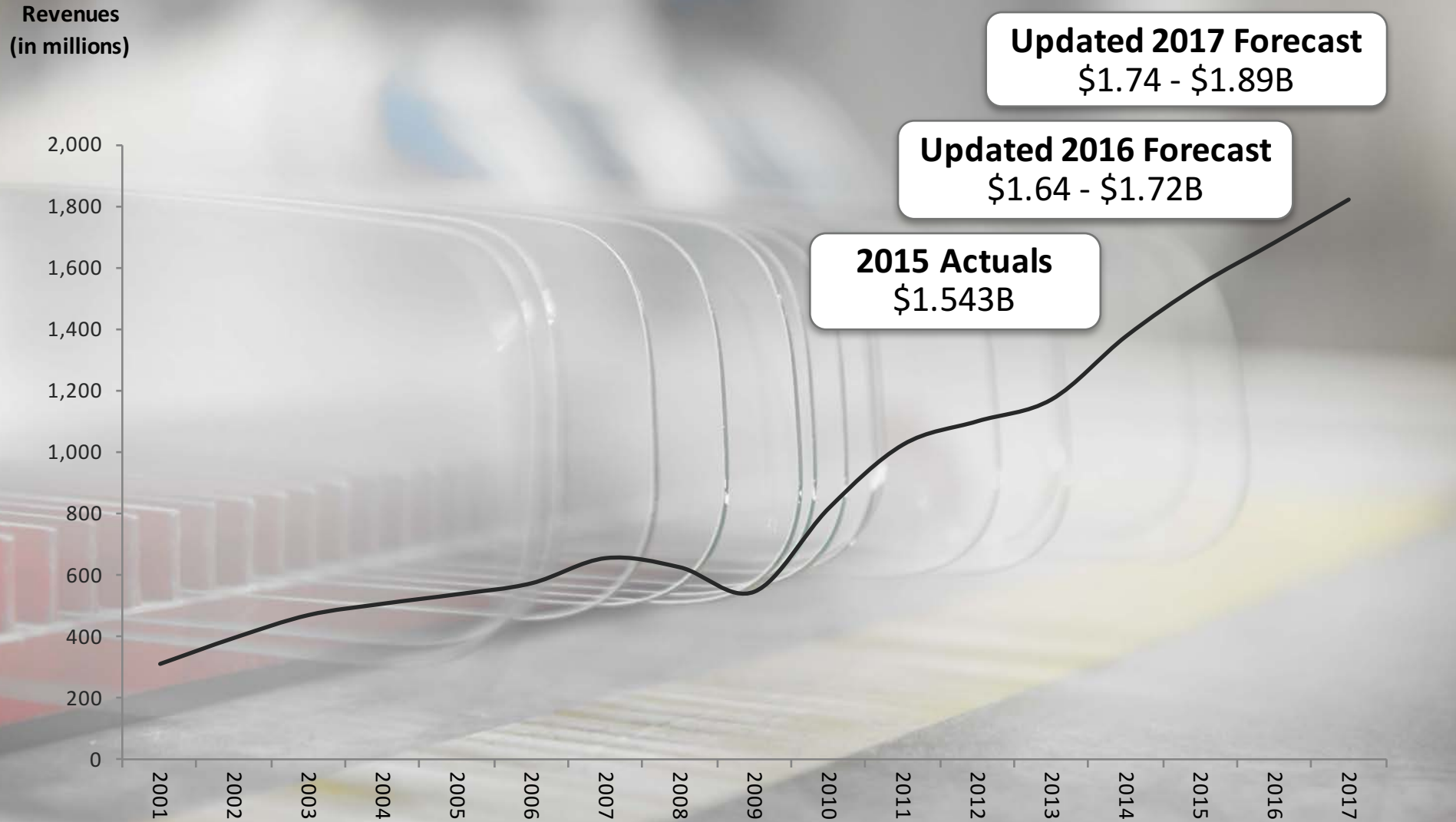
A Strategic Module for Content and Feature Delivery



<https://www.youtube.com/watch?v=4lkkBvhwmW0>

2016 and 2017 Forecasts

Based off IHS Estimates





Thank You

